



**California**  
**Guided Pathways**



**California Guided Pathways Project  
Overview of Advance Work for Pathways Institute #1  
Pathways Institutions and Coaches**

**Dr. Rob Johnstone**

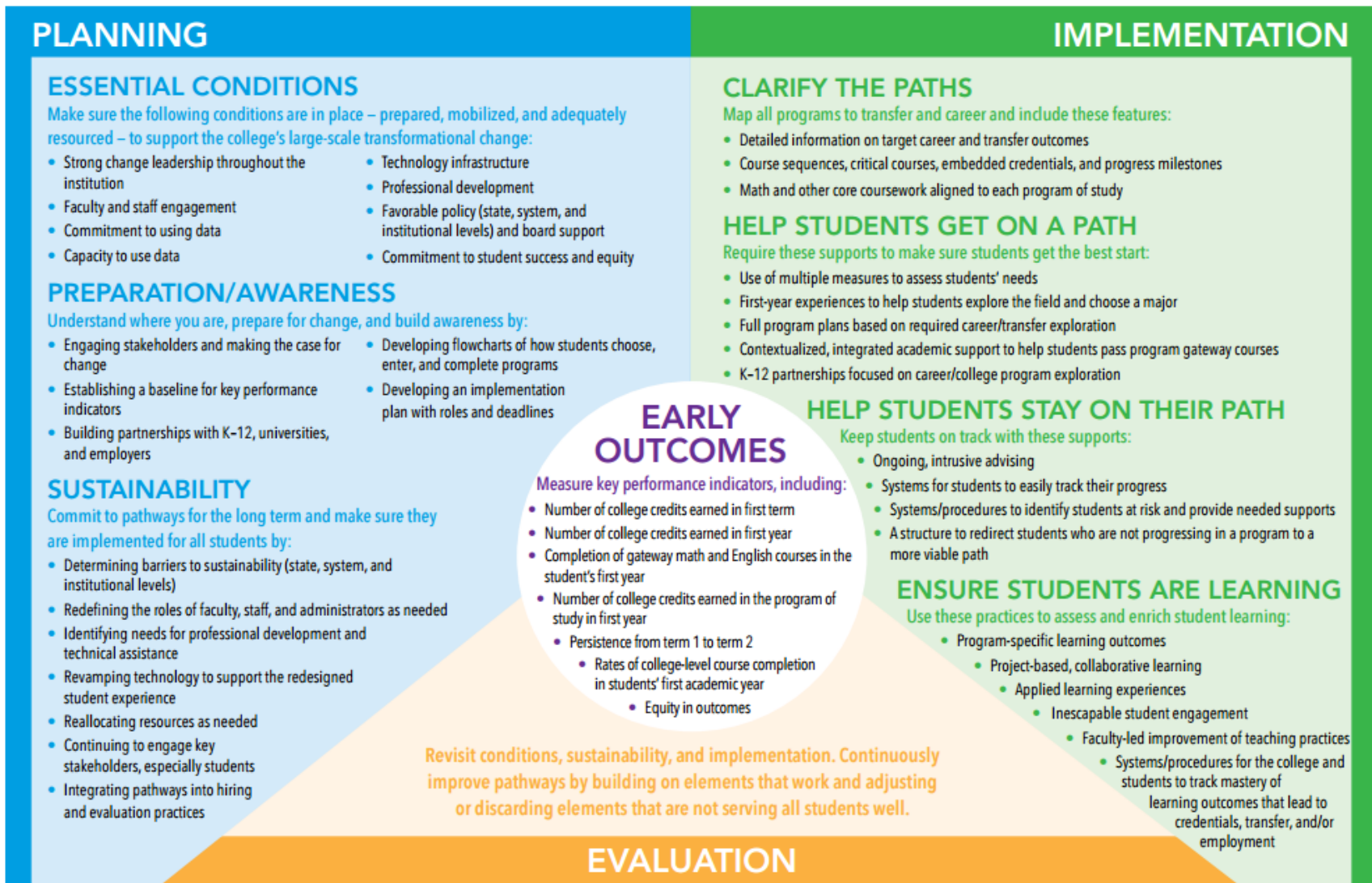
**Founder & President, National Center for Inquiry & Improvement and  
Project Director, California Guided Pathways Project**

**May 18, 2017**



# Guided Pathways: Planning, Implementation, Evaluation

Creating guided pathways requires managing and sustaining large-scale transformational change. The work begins with thorough planning, continues through consistent implementation, and depends on ongoing evaluation. **The goals are to improve rates of college completion, transfer, and attainment of jobs with value in the labor market — and to achieve equity in those outcomes.**





# Pathways Institute #1

- **Leadership for Transformational Change:  
Implementing Pathways at Scale**
- September 17-19, 2017
- Hilton Orange County Costa Mesa, Costa Mesa
- Registration opens June 30, closes July 14
- Project pays for teams of five – registration, a two-night stay at the hotel, materials and meals.
- Slots for up to two additional team members – \$1500 per person



# Role of Team Facilitator

- Primary college contact
  - For NCII, CCCSE and pathways coaches
- Lead in convening internal pathways team
- Coordinate completion of advance work and post-institute work and submit on behalf of institution
- Identify institution's pathways team and complete registration



# Role of Pathways Coaches

- Communicate and provide support to institutions in advance of the institutes
- Provide guidance for advance work and post-work
- Review advance work and provide feedback; note questions for team discussion at institute
- Facilitate team conversations during strategy sessions at institutes; ensure completion of short-term action plan
- If funding available from the college, provide limited between-institute technical assistance upon request
- Lead coach – primary contact
- Partner coach – provides additional support and content based on expertise and experience



# Summary of Advance Work

- Recommended Readings

- *Redesigning America's Community Colleges: A Clearer Path to Student Success*, by Thomas Bailey, Shanna Smith Jaggars, & Davis Jenkins
- *Implementing Guided Pathways: Early Insights From the AACC Pathways Colleges* by Davis Jenkins, Hana Lahr, and John Fink (CCRC):  
<http://ccrc.tc.columbia.edu/publications/implementing-guided-pathways-aacc.html>
- *Pathways Demystified*, by Rob Johnstone

- Key Performance Indicators Review

- Pathways Scale of Adoption Self-Assessment

- Team Discussion and Completion of Part 1 of the Short-Term Action Plan



# Key Performance Indicators

- Fall new student cohort - first time ever in college
  - 2012-13 through 2016-17
  - Dual enrollment students excluded (but can be analyzed later)
- Short-term measures that are correlated with student completion
- Data definitions were attached to email
- ERP & CCRC will be reporting on these KPIs over the course of the project
- You will receive summary charts / tables from ERP in early July





# Key Performance Indicators

- **Early momentum KPIs**
  - Earned 6+ / 12+ college credits in term 1
  - Earned 15+ / 24+ / 30+ college credits in year 1
- **Gateway math and English completion KPIs**
  - Completed college math in year 1
  - Completed college English in year 1
  - Completed both college math and English in year 1
- **Persistence KPI**
  - Term 1 to term 2
- **College course completion KPI**
  - College-level course completion rate in students' first academic year
- **Attempted Credits KPIs**
  - Attempted 15+ in term 1; 30+ in year 1 (including developmental)



# Scale of Adoption Assessment Tool

- Should be completed as a team
- Important to be honest about where you are in arc of the implementation
- This tool will be used to follow the institution's progress over the course of the project
  - Will be part of homework for every institute
- Column 2 – scale of adoption at our college
- Column 3 – progress to date implementing practice
- Column 4 – next steps toward reaching scale & timeline



# Short Term Action Plan

- Complete **Part 1** of the short term action plan
  - Parts 2, 3, & 4 will be handed out and completed during team time at Institute #1
- Short-term action plan should be completed as a group
  - Can be full internal institution pathways team or institute team
- Observations/reactions from reviewing KPIs
- Observations/reactions from assessment tool responses
- Thoughts on cultural readiness for scaled implementation



# Next Steps and Timeline

- Email with coach – college partnerships sent out
- KPI Data will be emailed to you in early July
- Lead coaches will reach out to the team facilitator to schedule conference call over the summer after data sent to colleges
- Your team's data collection, pathways assessment, and completed Part 1 of the Short Term Action Plan are due to CCCSE by September 1, 2016. Completed templates should be submitted to Coral Noonan-Terry at [noonan@cccse.org](mailto:noonan@cccse.org).
- Coral will reach out if advance work is incomplete
- Lead coach will review advance work and contact team facilitator before institute if supplemental information is needed



# Questions?

- Please type questions in the chat window
- Follow up questions can be addressed with your lead coach or you can email me at [rob@inquiry2improvement.com](mailto:rob@inquiry2improvement.com)